



European Leader Association
for Rural Development
Brussels, www.elard.eu

Portuguese
Presidency
2018 – 2019



ELARD

European LEADER Association for Rural Development



The ELARD network

International non-profit organization founded in 1999

Founded by 5 European national informal LEADER networks:

1. *French LEADER Network* - **LEADER France**
2. *Greek LEADER Network* - **Ελληνικό Δίκτυο LEADER**
3. *Irish LEADER Network* - **Comhar LEADER na hEireann**
4. *Italian LEADER Network* - **AssoLEADER**
5. *Spanish LEADER Network* – **REDR**

Member networks in 25 countries representing more than 2000 LAGs

AUSTRIA, BULGARIA, FYROM-MACEDONIA, GERMANY, CZECH REPUBLIC, CROATIA, DENMARK, ESTONIA, FINLAND, FRANCE, GREECE, HUNGARY, IRELAND, ITALY, LATVIA, LITHUANIA, NETHERLANDS, POLAND, PORTUGAL, ROMANIA, SERBIA, SLOVAKIA, SLOVENIA, SPAIN, SWEDEN.



Aims of ELARD

campaigns to **spread the philosophy, principles and reach of the LEADER** method grounded in the seven specific features

...in order to achieve SUSTAINABLE RURAL DEVELOPMENT

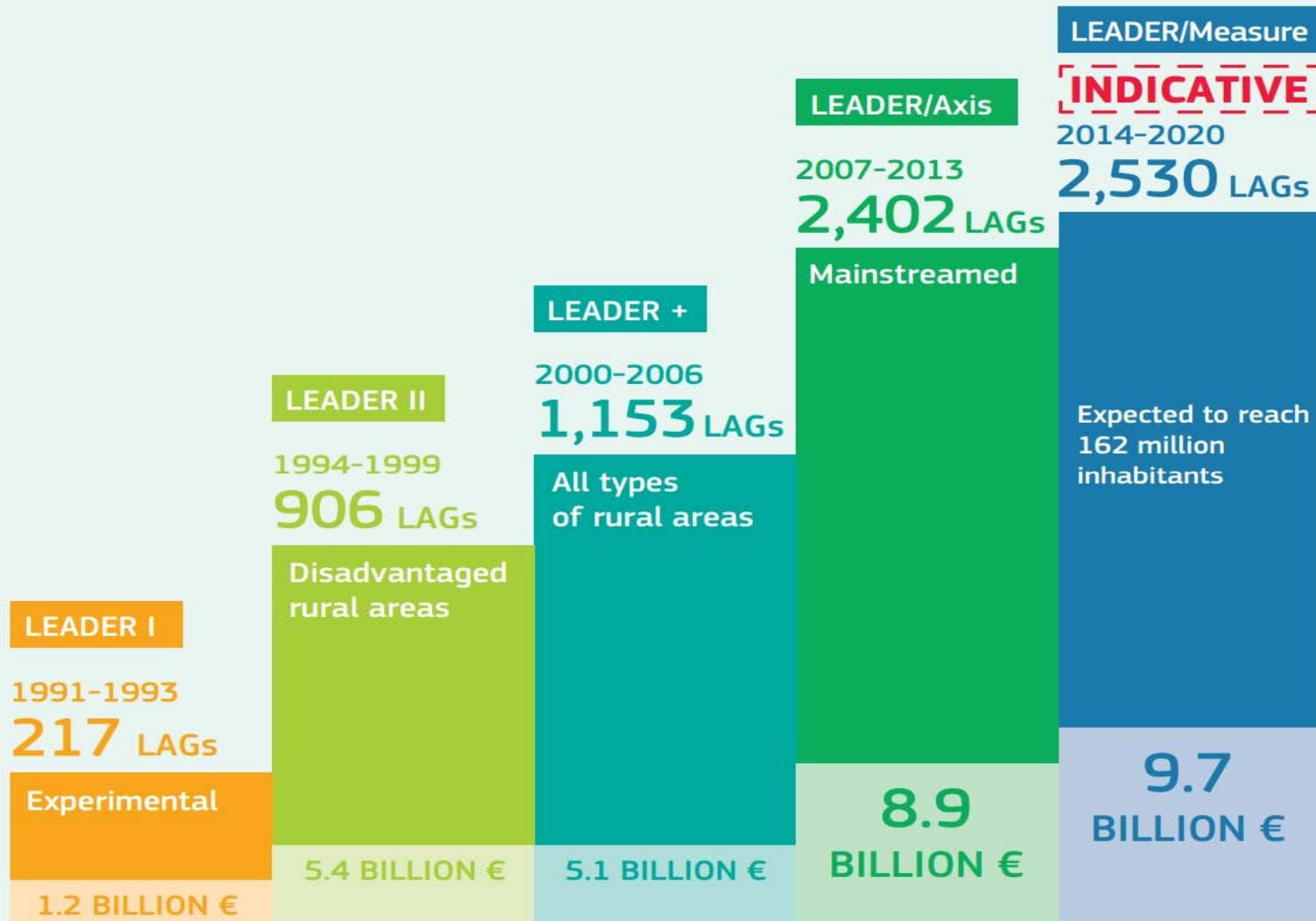
represents the **interests and needs of local action groups in front of other international, European, and national institutions to liaise with other stakeholders and institutions**

...in order to INFLUENCE EU and national POLICIES in favour of INTEGRATED rural development





LEADER evolution



Source: DG AGRI 2014-2020 Provisional budget data

Main numbers of LEADER

27 years implemented in European Union countries, some practices also outside EU;

2500 LAGs (Local Action Group) cover 80% of European territory;

30% of total European population (200 million) influenced by LAGs activities;

More than 1 million activities/projects implemented through local development strategies;

More than 40 billion € invested through National Rural Development Plans (public+ private funding).



Activities of ELARD

NETWORKING

- Services and support for members
- Organising trainings, seminars, events
- Communication tools (website, newsletter, social media)
- Cooperation with ENRD CP on tools

POLICY-RELATED WORK

- LEADER dissemination
- Presence in Brussels (Participation to events/meetings)
- Seats on EU level committees/groups
- Cooperation with other EU-level NGOs (ERP, ECM)

TRANSNATIONAL COOPERATION PLATFORM

- Exchange of good practice
- Promotion of TNC
- Help with partner search

RUNNING AND PARTICIPATING IN PROJECTS

- Expertise; link to LEADER dissemination
- Raising the revenue of the organisation
- Example: Bioregions, ENPARD Georgia, China cooperation



Bild 6

JJ1

text added: Help with partner search, ACORD Project in Bosnia
JJ; 2016-05-30

Presence of ELARD in committees/groups on EU level

EUROPEAN NETWORK FOR RURAL DEVELOPMENT (ENRD)

Rural Networks Assembly,
Rural Networks Steering Group,
Leader/CLLD sub-group,
EIP-AGRI

EUROPEAN COMMISSION

Civil Dialogue Group for Rural Development (DG AGRI),
Structured Dialogue Group for the ESI Funds (DG REGIO)

EUROPEAN RURAL PARLIAMENT (ERP)

Steering Group, Coordination Group

EUROPEAN COUNTRYSIDE MOVEMENT (ECM)



Current key policy documents

CORK 2.0 Declaration

ELARD LEADER/CLLD Tartu Declaration

European Rural Manifesto

Rural Agenda post 2020

CAP Communication

EESC - CLLD Exploratory Opinion

Future Multiannual Financial Framework





Vad kommer att ske framöver?

- Budgetbeslut i EU: ska kunna gälla från 1/1 2021 – stor osäkerhet och ingen officiell plan B. (Brexit och Val i maj 2019)
- Nationell strategisk plan ska lämnas till Kommissionen redan 1/1 2020 vad gäller CAP. Vad gäller övriga program vet jag inte.
- Tydligen är dessa frågor business as usual under övergångsregeringen. Alltså det pågår ett arbete nu.



Vad innebär detta?

- 5% garanterad till LEADER-metoden i CAPens pelare 2.
- Möjlighet att arbeta med flerfondslösning även i nästa programperiod, men inga förslag lagda i övriga fonder, dock finns CLLD med i CPR
- Inga garantier – Medlemsstaterna beslutar om hur omsättningen ska se ut